

M-Audio Support Documentation: Installing the Delta 1010 under Windows 2000

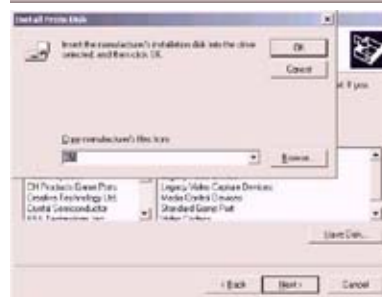
1. After following the instructions in the manual for installation of the PCI card into your Computer. Re-boot your computer. The "Found New Hardware Wizard" dialog box will appear. Press next.

2. Here you will select "Display a list of the known drivers for this device so that I can choose a specific driver"

3. Select "Sound, video and game controllers" and click next

4. From here you will click on "have disk"

5. From here you will click on "browse" and point to your Midiman CD ROM Driver Disk and the corresponding Product. Once found click OK. then click Next



6. Once we reach this screen click on the M Audio Delta Interface Card to highlight and then click next.

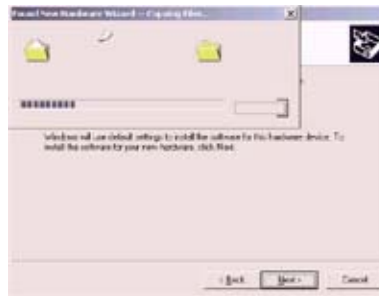
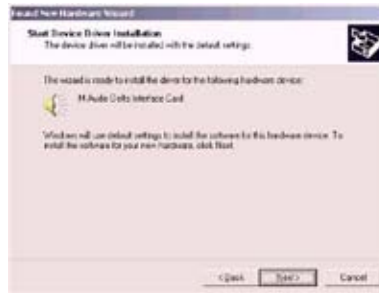


7. When this dialog box comes up press "Yes".



Update Driver Warning

8. The Wizard will inform you that it is ready to install the driver. Click Next



9. You will be prompted to restart your computer. Click Yes.



Restart??