

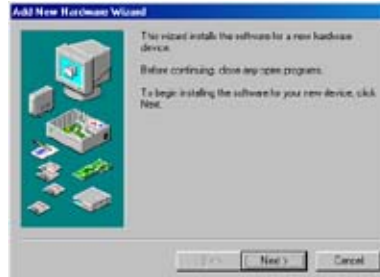
M-Audio Support Documentation:

Installation instructions for Midiman Delta Products (Win 9x)

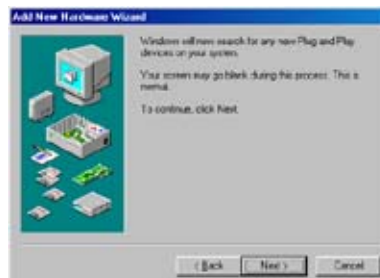
The following screen shots apply to these 3 installation scenarios:

1st time installation mounting the sound card securely into the appropriate mother board slot.
Device removal from windows Device Manager.
Using the Add New Hardware Wizard located in control panel.

1. After restarting the computer the first Add New Hardware Wizard. Click Next



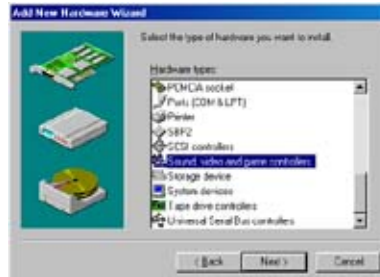
2. Click Next Again.



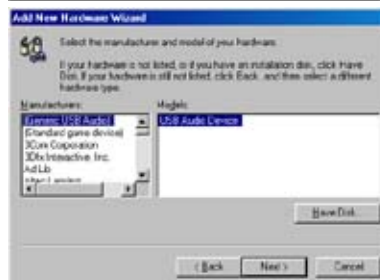
3. Choose No I Want To Select Hardware From a List.



4. Select Sound Video and Game Controllers.



5. Click on Have Disk button.



6. Insert your Midiman Drivers Disk:

- A. If you have a 3.5 inch floppy disk click OK.
- B. If you have a CD disk then click Browse.

7. Now Choose Your CD drive letter you inserted the Midiman Drivers Disk into.

8. Now Double Click on the Delta Products folder.

9. Double Click on the Delta98 for Windows 95/98 or DeltaNT for NT Workstation 4.0.

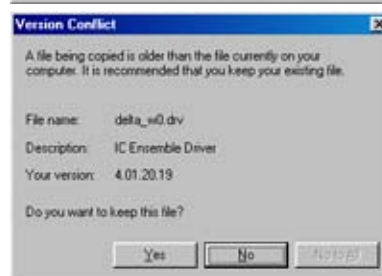
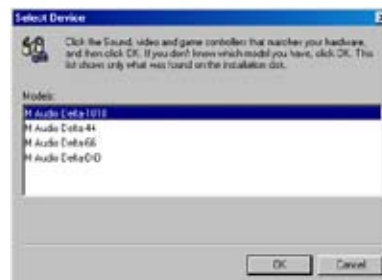
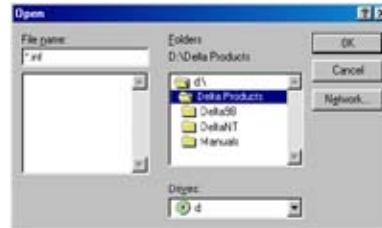
10. Click OK.

11. Choose the Delta Card you are installing Click OK.

12. Click Next.

13. Click NO. DO NOT KEEP THE NEWER VERSION OF THE FILE BEING COPIED!

You will not get this next screen on a 1st time install. This screen appears if you are Reinstalling or Updating the drivers. DO NOT KEEP THE NEWER VERSION OF THE FILE BEING COPIED.



14. Keep Clicking NO on all the Version Conflict windows; if you say no to one, you should say no to them all.

Click OK.

15. Click FINISH, and reboot your computer. Your Delta card is now installed.

