

### M-Audio Support Documentation:

## Setting Up Your Delta Card On Windows NT

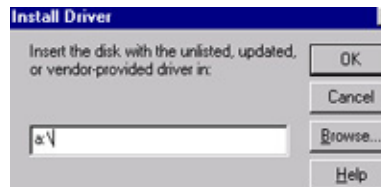
1. From the Control Panel, double-click on the MULTIMEDIA icon to bring up the MULTIMEDIA window. After this, go to the DEVICES tab.



2. Windows will ask you what type of device to add. "Unlisted or Updated Driver" will be selected by default. Click OK.



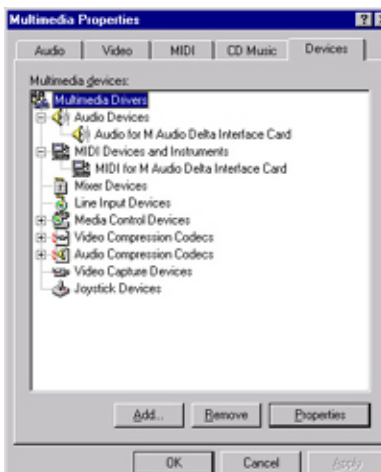
3. Next, the "Install Drivers" window will appear asking you to direct Windows to the proper directory where the drivers are. If you unzipped or copied to a floppy, direct it to "a:/" but if they are on your Hard Drive or CD ROM, you may have to BROWSE and navigate into the folder where the drivers are.



4. After directing Windows to the proper location, it will inform you that it has found the Delta Card. Click OK. Windows will then prompt you to re-boot. Do so at this time.



5. After a successful re-boot, we can check whether or not the Delta card has been installed by going to the MULTIMEDIA icon again. Go to the DEVICES tab and check that the Delta shows up as an option under AUDIO DEVICES as well as MIDI DEVICES AND INSTRUMENTS.



NOTE: if you do not own a Delta 1010, it will not show up under MIDI DEVICES AND INSTRUMENTS because only the 1010 supports MIDI within the Delta Series.

8. You're all set after this. You may also want to take a look at the other Tips and Tricks for help with configuring the Delta card to work with various software on your PC.

