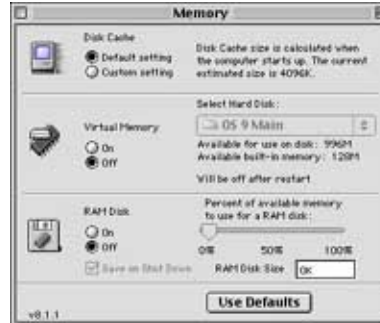


M-Audio Technical Support Documentation: Setting Up Your Delta To Work With Logic (Mac)

1. After having installed the M-Audio Delta drivers, make sure that VIRTUAL MEMORY is off. This can be found by going to Apple Menu, selecting CONTROL PANELS, and then MEMORY. After doing so, restart your computer.



2. Next, locate the ASIO2 Delta driver and drag it into the ASIO folder within the Logic folder. Make sure you have the proper ASIO folder. If you own a Delta 66, use the ASIO2 Delta 66 driver. If you have a 1010, use the ASIO2 Delta 1010 Driver, etc.



3. Next, set up your M-Audio Delta Control Panel to work with ASIO. It is recommended that you close any ASIO applications before changing any of these settings. If you are unsure of how to set up the M-Audio Delta Control Panel, click [here](#).

Go ahead and launch Logic. If you have recently updated Logic, you may have to launch an older version of Logic, close out of it, and re-launch the newer version of Logic to initialize the ASIO drivers.

4. Once you're in logic, go to the AUDIO menu and then go to Hardware and Drivers.

If Mac is checked, open up the pull-down shade and uncheck everything within the menu (monitoring, larger disk buffer, etc.).

Put a checkmark in the ASIO checkbox if it isn't already checked. Within that menu, you will want to enable 20/24 bit recording as well as monitoring as shown here.



5. Next, enable a track for recording by clicking on the "R". A Window will appear prompting you where to store the Wave Data. Choose or create a folder and then click OK.



6. Double-click on the Audio Track you just enabled to bring up the mixer window in Logic. Click and hold down on Input 1 (See "a." in the diagram) to select the input source.

Also click on the "o" at the bottom (see "b.") of the fader to toggle between recording stereo pairs or mono tracks.

You're now all set to record!



M-AUDIO

 propellerhead

 ableton



arKaos

copyright 1988-2003 midiman inc. all rights reserved.