

NOTE: TEST POINT CONDITIONS:
 120 VAC LINE. 16 OHM LOAD
 GAIN @ '5', ALL OTHER CONTROLS @ '10'
 EXCEPT REVERB @ '0', BOOST ON
 7.5mVrms INPUT SIGNAL @ 400HZ.

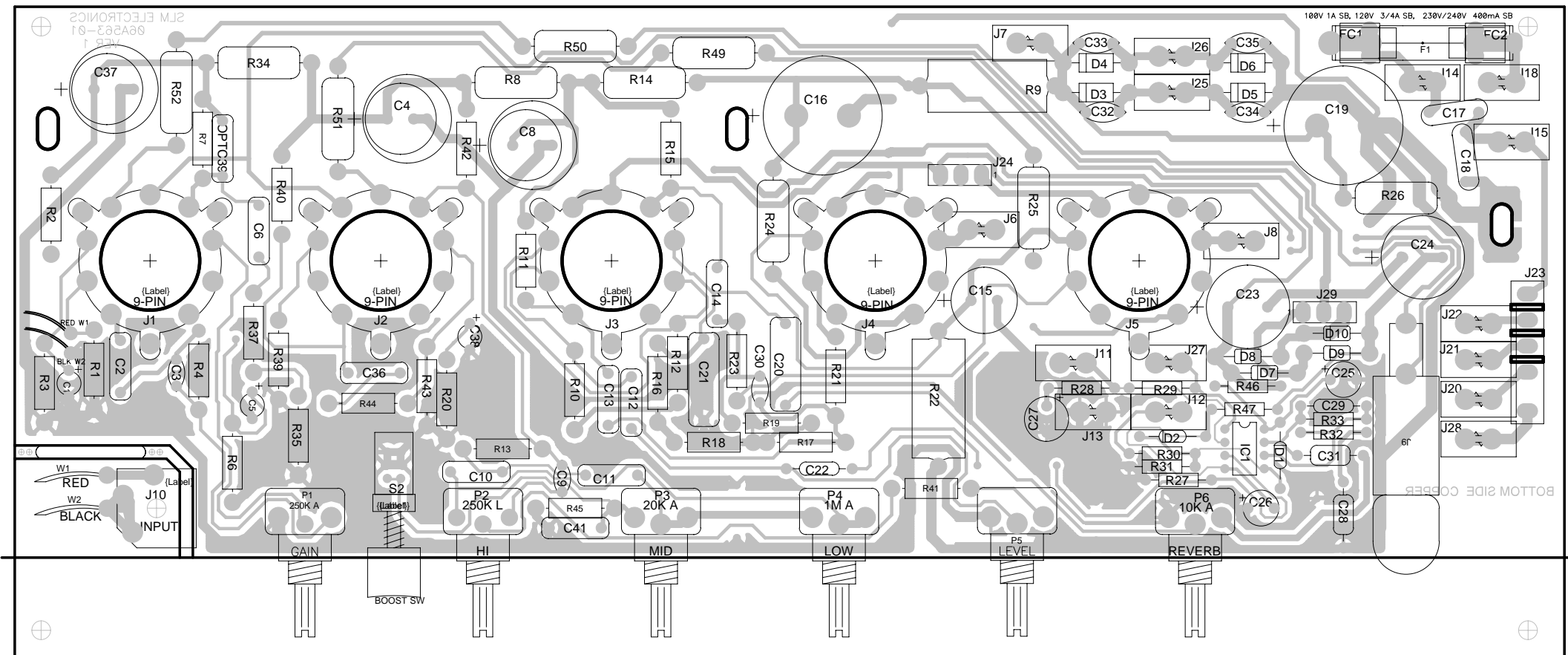
CAUTION:
 THIS SCHEMATIC IS PROVIDED FOR USE BY QUALIFIED PERSONNEL.
 TO AVOID RISK OF ELECTRIC SHOCK, REFER SERVICING TO QUALIFIED
 SERVICE PERSONNEL. DO NOT PERFORM ANY SERVICING BEYOND
 THAT EXPLAINED IN THE OPERATING INSTRUCTIONS.

NOTES:
 1) CAUTION: SHOCK HAZARD!!
 THIS UNIT CONTAINS HAZARDOUS VOLTAGE. DISCONNECT POWER
 AND BE SURE POWER SUPPLY IS DISCHARGED BEFORE
 TOUCHING INTERNAL PARTS.
 2) UNLESS NOTED, RESISTOR VALUES IN OHMS, 1/4W-5% TOL.
 CAPACITOR VALUES IN MICROFARADS, 50V-10% TOL.
 3) VOLTAGES ARE MEASURED WITH 1 MEGOHM OSCILLOSCOPE
 AND 10 MEGOHM DIGITAL VOLTMETER.

ASSY PART # 07-563-01

Power Table			
RefDes	+14.7V	-14.7V	
IC1	8	4	

-	-	-	-	-	-	
-	-	-	-	-	-	
A	12/11/03	INITIAL ISSUE				
REV	Date	DESCRIPTION	Ecr(s)/Ecn(s)	Chgd By	Appvd by	Date
THE INFORMATION CONTAINED ON THIS DRAWING IS PROPRIETARY TO ST. LOUIS MUSIC, INC.						
Signatures:			Date:			
Drawn: REM		4/24/01		 11880 Borman Drive, St. Louis, MO 63146		
Checked:			First Used On:			
Released:						
Plot Date: Mon Dec 15, 2003		Drawing Size: C		Drawing Title:		
Plot Time: 08:25:01		Drawing Type: Schematic		PWA - TUBE GUITAR AMP		
Tolerance:		Class Code: NONE		Drawing Number:		
		Sheet 1 of 1		07S563		



ASSY P/N 07-563-01 BOTTOM COPPER SHOWN (TOP VIEW)

FOR ASSEMBLY P/N: 07-563-01


USE SCHEMATIC # 07S563

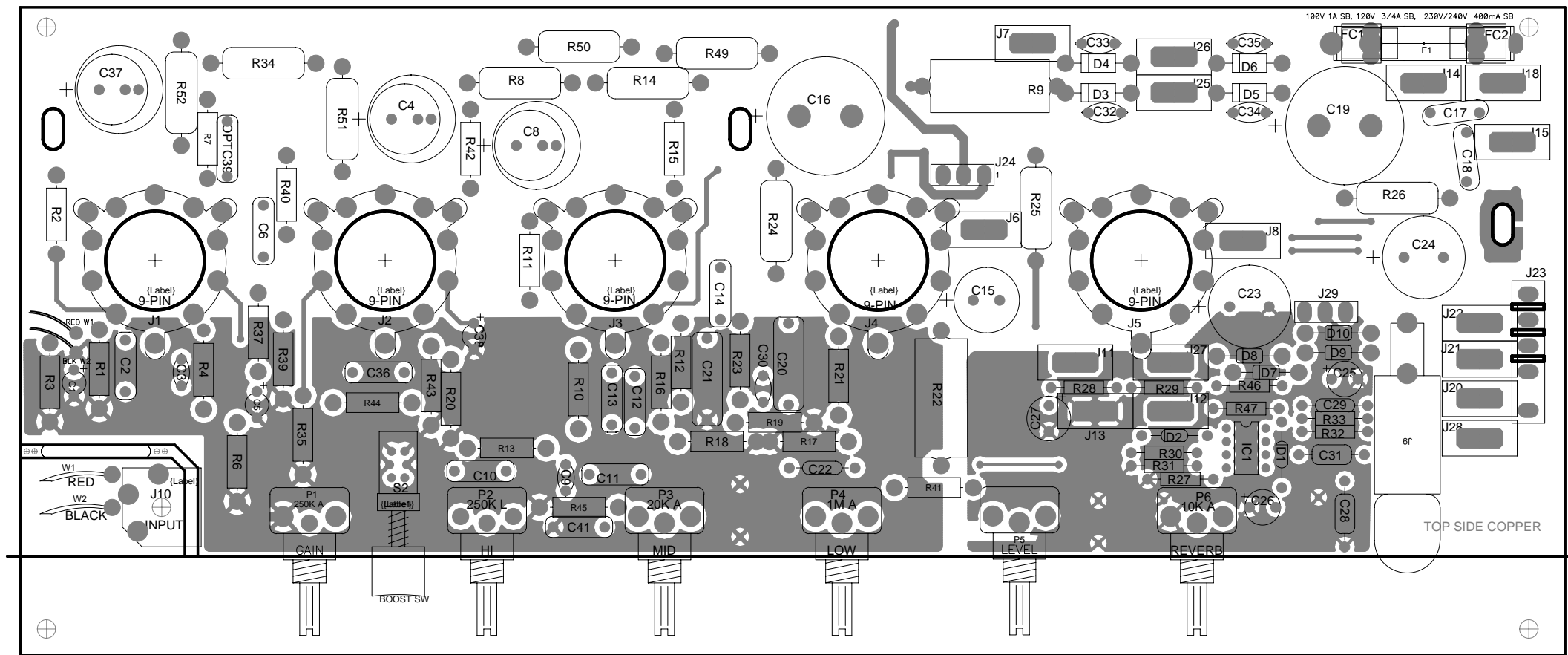
NOTES:

1. APPLY RTV SILICONE SEALANT PER SLM DOCUMENT NUMBER 00A005-00.

CAUTION:

THIS ASSEMBLY DRAWING IS PROVIDED FOR USE BY QUALIFIED PERSONNEL.
TO AVOID RISK OF ELECTRIC SHOCK, REFER SERVICING TO QUALIFIED SERVICE PERSONNEL.
DO NOT PERFORM ANY SERVICING BEYOND THAT EXPLAINED IN THE OPERATING INSTRUCTIONS.

REV	Date	DESCRIPTION	Ecr(s)/Ecn(s)	Chgd By	Appvd by	Date
A	12/11/03	INITIAL ISSUE				
THE INFORMATION CONTAINED ON THIS DRAWING IS PROPRIETARY TO ST. LOUIS MUSIC, INC.						
Signatures:		Date:		 11880 Borman Drive, St. Louis, MO 63146		
Drawn: REM		6/27/01				
Checked:						
Released:						
Plot Date: Thu Dec 11, 2003		Drawing Size: B		Drawing Title: PWA - TUBE GUITAR AMP		
Plot Time: 15:06:55		Drawing Type: ASSEMBLY		Drawing Number: 07-563		
Tolerance:		Class Code: NONE		Sheet 1 of 2		




ASSY P/N 07-563-01 TOP COPPER SHOWN (TOP VIEW)

FOR ASSEMBLY P/N: 07-563-01
USE SCHEMATIC # 07S563

NOTES:
1. APPLY RTV SILICONE SEALANT PER SLM DOCUMENT NUMBER 00A005-00.

CAUTION:
THIS ASSEMBLY DRAWING IS PROVIDED FOR USE BY QUALIFIED PERSONNEL.
TO AVOID RISK OF ELECTRIC SHOCK, REFER SERVICING TO QUALIFIED SERVICE PERSONNEL.
DO NOT PERFORM ANY SERVICING BEYOND THAT EXPLAINED IN THE OPERATING INSTRUCTIONS.

-	-	-	-	-	-
A	12/11/03	INITIAL ISSUE			
REV	Date	DESCRIPTION	Ecr(s)/Ecn(s)	Chgd By	Appvd by
THE INFORMATION CONTAINED ON THIS DRAWING IS PROPRIETARY TO ST. LOUIS MUSIC, INC.					
Signatures:		Date:	 11800 Borman Drive, St. Louis, MO 63146		
Drawn: REM		6/27/01			
Checked:					
Released:					
Plot Date: Thu Dec 11, 2003		Drawing Size: B		Drawing Title: PWA - TUBE GUITAR AMP	
Plot Time: 15:09:14		Drawing Type: ASSEMBLY		Drawing Number: 07-563	
Tolerance:		Class Code: NONE		Sheet 2 of 2	

A	12/12/03	INITIAL ISSUE				
Rev.	Date	DESC.	ECR(s)/ECN(s)	Chgd by	Appvd by	DATE
THE INFORMATION CONTAINED ON THIS DRAWING IS PROPRIETARY TO ST. LOUIS MUSIC, INC.						
			SLM Electronics 11880 Borman Drive, St. Louis, MO 63146			
Signatures:		Date:				
Drawn: REM		12/12/03				
Checked:				First Used On: -		
Released:						
Tolerance:	Drawing Size:	A		Drawing Title:	PWA - TUBE GUITAR AMP	
	Drawing Type:	PL		Drawing No.:	07-563-PL	
	Class Code:					
	Scale:	N/A				

PARTS LIST

ITEM	P/N	TOTAL USED	DESC	VALUE	LABEL	MFG P/N 1	MFG P/N 2
C1	12R225-50	3	2.2 uF 50V 20% EL	2.2		USA1H2R2MCA1T -- AVNET	SSP2R2M1HC07 -- JAMICON
C2	10-102-10	1	.001 uF 400V [10% TOL] WIMA MTLPOLY	0.001		FKS31000-400-5B -- WIMA	MFR5102K400 -- EVOX
C3	10R471-52	3	470 pF 500V 10% Z5F DISK RADIAL TAPED	470 pF		S471K25Y5PN6TJ5 -- AVNET	D471K29Z5FNTHM -- PHILLIPS
C4	12-106-95	3	10 uF 450V 20% EL	10		UVX2W100MHA -- NICHICON	1SG2WWB106M1320 -- SAMHWA
C5	12R225-50	3	2.2 uF 50V 20% EL	2.2		USA1H2R2MCA1T -- AVNET	SSP2R2M1HC07 -- JAMICON
C6	10-223-10	7	.022 uF 400V [10% TOL] WIMA MTLPOLY	0.022		MKS4 .022-400-10 -- WIMA	0
C8	12-106-95	3	10 uF 450V 20% EL	10		UVX2W100MHA -- NICHICON	1SG2WWB106M1320 -- SAMHWA
C9	10R471-52	3	470 pF 500V 10% Z5F DISK RADIAL TAPED	470 pF		S471K25Y5PN6TJ5 -- AVNET	D471K29Z5FNTHM -- PHILLIPS
C10	10-223-10	7	.022 uF 400V [10% TOL] WIMA MTLPOLY	0.022		MKS4 .022-400-10 -- WIMA	0
C11							
C12	10-103-10	1	.01 uF 400V [10% TOL] WIMA MTLPOLY	0.01		MKS4 .01-400-10 -- WIMA	
C13	10-223-10	7	.022 uF 400V [10% TOL] WIMA MTLPOLY	0.022		MKS4 .022-400-10 -- WIMA	
C14							
C15	12-227-32	1	220 uF 35V 20% EL	220		UVX1V221MPA -- NICHICON	SKR221M1VG13 -- ICD
C16	12-476-42	1	47 uF 450V 20% EL	47		LLK2W470MHSZ -- NICHICON	3HC2WVB476MHA22 -- SAMHWA
C17	10-332-01	2	.0033 uF [20% TOL] UL/VDE DISK	0.0033		DE2E3KH332MA3B -- MURATA	0
C18							
C19	12-107-93	1	100 uF 450V 20% EL	100		LLQ2W101MHSZ -- NICHICON	ECOS2WP101BA -- PANASONIC
C20	10-104-10	2	.1uF 400V [10% TOL] WIMA MTLPOLY	0.1		MKS4 .1-400-10 -- WIMA	MMK15104K400 -- EVOX
C21							
C22	10A102-11	2	.001 uF 100V 10% X7R	0.001		SA101C102KAA -- AVX	C410C102K1R5CA -- KEMET
C23	12-228-26	2	2200 uF 25V 20% EL	2200		UVX1E222MHA1AA -- NICHICON	228CKR025M-SI -- ILLINOIS CAPACITOR
C24							
C25	12R476-12	2	47 uF 16V 20% EL	47		SSP470M1CE07 -- JAMICON	USA1C470MCA1TE -- NICHICON
C26							
C27	12R107-32	1	100 uF 35V 20% EL	100		1SG1VAB107MAR08 -- SAMHWA USA INC.	SKP101M1VE11 -- JAMICON C/O DYTRONIX
C28	10A224-01	1	.22 uF 50V 10% X7R	0.22		SA305C224KAA -- AVX	C430C224K5R5CA -- KEMET
C29	10A102-11	2	.001 uF 100V 10% X7R	0.001		SA101C102KAA -- AVX	C410C102K1R5CA -- KEMET
C30	10R471-52	3	470 pF 500V 10% Z5F DISK RADIAL TAPED	470 pF		S471K25Y5PN6TJ5 -- AVNET	D471K29Z5FNTHM -- PHILLIPS
C31	10A104-01	1	.1 uF 50V 10% X7R	0.1		SA305C104KAA -- AVX	C430C104K5R5CA -- KEMET
C32	10-102-02	4	.001 uF 1KV Z5F DISK/NON-STOCK	0.001		DD102 -- PHILLIPS	0
C33							
C34							
C35							
C36	10-223-10	7	.022 uF 400V [10% TOL] WIMA MTLPOLY	0.022		MKS4 .022-400-10 -- WIMA	
C37	12-106-95	3	10 uF 450V 20% EL	10		UVX2W100MHA -- NICHICON	1SG2WWB106M1320 -- SAMHWA
C38	12R225-50	3	2.2 uF 50V 20% EL	2.2		USA1H2R2MCA1T -- AVNET	SSP2R2M1HC07 -- JAMICON
C41	10-223-10	7	.022 uF 400V [10% TOL] WIMA MTLPOLY	0.022		MKS4 .022-400-10 -- WIMA	0
D1	21A914-01	2	75V PIV 10mA/1V .5W	1N914		1N4148TR -- MARSHALL	
D2							
D3	21A407-01	4	1KV PIV 1A .5W	1N4007TR		1N4007TR -- AVX	
D4							
D5							
D6							
D7	21A402-01	4	100V PIV 1A .5W	1N4002TR		1N4002TR -- AVX	
D8							
D9							
D10							
F1	23-318-05	1	3/4A 250V 3AG SB FUSE	3/4 A SB		M313.750 -- LITTELFUSE	

PARTS LIST

ASSEMBLY PART # 07-563-01

REVISION: A

ITEM	P/N	TOTAL USED	DESC	VALUE	LABEL	MFG P/N 1	MFG P/N 2
FC1	23-926-02	2	Universal Fuse Clip	23-926-02		OG 0751.0099 -- SCHURTER	POP AD43H -- ENGINEERED FASTENERS
FC2							
IC1	37-072-01	1	TLO-72CP DUAL OP-AMP	TLO-72		NJM072B -- NJR	TLO-72CP -- SGS THOMPSON
J1	17-451-09	5	9 PIN TOP PC MNT TUBE SOCKET	9-PIN		BELTON VT9-PT-2	
J2							
J3							
J4							
J5							
J6	17-894-01	11	.187 PC TAB STBL LOC 6024-6	.187 TAB		6024-6 -- ZIERICK MFG	
J7							
J8							
J9	17-581-01	1	PC MNT BAYONET SOCKET	_AMP HOLDEF		07-35XP11N -- LIGHTING COMPONENTS	
J10	39-012-01	1	112APC JACK VERT.	112 APC	INPUT	LJ-0695F-02-3TS -- LIH SHENG PRECISION	
J11	17-894-01	11	.187 PC TAB STBL LOC 6024-6	.187 TAB	0	6024-6 -- ZIERICK MFG	
J12							
J13							
J14	17-836-01	5	.250 PC TAB STBL LOC 6021-6	.250 TAB		6021-6 -- ZIERICK MFG	
J15							
J18	17-894-01	11	.187 PC TAB STBL LOC 6024-6	.187 TAB		6024-6 -- ZIERICK MFG	
J20							
J21							
J22							
J23	17-320-05	1	5 PIN HEADER 5MM POLAR	0		0	
J24	17-310-03	2	.156 ST POL MFSS156-3-D HEADER				
J25	17-836-01	5	.250 PC TAB STBL LOC 6021-6	.250 TAB		6021-6 -- ZIERICK MFG	
J26							
J27							
J28	17-894-01	11	.187 PC TAB STBL LOC 6024-6	.187 TAB		6024-6 -- ZIERICK MFG	
J29	17-310-03	2	.156 ST POL MFSS156-3-D HEADER	0		0	
P1	70-254-70	2	250K AUDIO 5%@50% [10% TOL] HORZ MNT MTL 16MM	250K A	GAIN	V16L4[7X5+6_5][PH2D]N15[4_75]KC[BR]-15A250K[NO STOP%]/T -- NOBLE USA	
P2	70-306-70	1	250K LINEAR [10% TOL] HORZ MNT MTL	250K L	HI	V16L4(7X5+6_5)(PH2D)N15(4_75)KC(BR)-B250K(NO STOP%)/T -- NOBLE	
P3	70-203-70	1	20K AUDIO [15%@50%] HORZ MNT	20K A	MID	V16L4(7X5+6_5)(PH2D)N15(4_75)KC(BR)-15A10K(NO STOP%)/T -- NOBLE USA	
P4	70-105-70	1	1M AUDIO 15%@50% [10% TOL] HORZ MNT MTL	1M A	LOW	V16L4(7X5+6_5)(PH2D)N15(4_75)KC(BR)-15A1M(NO STOP%)/T -- NOBLE USA	
P5	70-254-70	2	250K AUDIO 5%@50% [10% TOL] HORZ MNT MTL 16MM	250K A	LEVEL	V16L4[7X5+6_5][PH2D]N15[4_75]KC[BR]-15A250K[NO STOP%]/T -- NOBLE USA	
P6	70-103-70	1	10K AUDIO 15%@50% (10% TOL) HORZ MNT MTL 16MM	10K A	REVERB	V16L4(7X5+6_5)(PH2D)N15(4_75)KC(BR)-15A10K(NO STOP%)/T -- NOBLE USA	
PWB1	06A563-01	1	VC1510	0		06A563-01	
R1	77-105-02	4	1M OHM .5W 1% RESISTOR	1M		1M-R86-1541 -- SEI	
R2	77-104-02	5	100K OHM .5W 1% RESISTOR	100K		100K-R86-1541 -- SEI	
R3	77-272-02	3	2.74K OHM .5W 1% RESISTOR	2.74K		2.74K-R86-1541 -- SEI	
R4	77-474-02	3	475K OHM .5W 1% RESISTOR	475K		475-R86-1541 -- SEI	
R6	77-272-02	3	2.74K OHM .5W 1% RESISTOR	2.74K		2.74K-R86-1541 -- SEI	
R7	77-224-02	5	221K OHM .5W 1% RESISTOR	221K		221K-R86-1541 -- SEI	
R8	78-103-02	3	10K 2W 5% MOX OR CF BULK	10K		10K-86-3263 -- SEI	
R9	78-151-05	1	150 OHM 5W 5%	150		AS-5 150 OHM 5% --IRC	RS-5 150 OHM 5% -- DALE
R10	77-105-02	4	1M OHM .5W 1% RESISTOR	1M		1M-R86-1541 -- SEI	
R11	77-823-02	1	82.5K OHM .5W 1% RESISTOR	82.5K		82.5K-R86-1541 -- SEI	
R12	77-102-02	1	1K OHM .5W 1% RESISTOR	1K		1K-R86-1541 -- SEI	
R13	77-473-02	1	47.5K OHM .5W 1% RESISTOR	47.5K		47.5K-R86-1541 -- SEI	
R14	78-103-02	3	10K 2W 5% MOX OR CF BULK	10K		10K-86-3263 -- SEI	
R15	77-104-02	5	100K OHM .5W 1% RESISTOR	100K		100K-R86-1541 -- SEI	

PARTS LIST

ASSEMBLY PART # 07-563-01

REVISION: A

ITEM	P/N	TOTAL USED	DESC	VALUE	LABEL	MFG P/N 1	MFG P/N 2
R16	77-105-02	4	1M OHM .5W 1% RESISTOR	1M		1M-R86-1541 -- SEI	
R17	77-224-02	5	221K OHM .5W 1% RESISTOR	221K		221K-R86-1541 -- SEI	
R18	77-223-02	1	22.1K OHM .5W 1% RESISTOR	22.1K		22.1K-R86-1541 -- SEI	
R19	77-224-02	5	221K OHM .5W 1% RESISTOR	221K		221K-R86-1541 -- SEI	
R20	77-272-02	3	2.74K OHM .5W 1% RESISTOR	2.74K		2.74K-R86-1541 -- SEI	
R21	77-103-02	3	10K OHM .5W 1% RESISTOR	10K		10K-R86-1541 -- SEI	
R22	78-121-05	1	120 OHM 5W 5% W/FEET	120		120-86-3763 -- SEI	
R23	77-103-02	3	10K OHM .5W 1% RESISTOR	10K		10K-R86-1541 -- SEI	
R24	78-101-01	2	100 OHM 2W 5% MOX OR CF BULK	100		100-86-3263 -- SEI	
R25							
R26	78-154-02	1	150K 2W 5% MOX OR CF BULK	150K		150K-86-3263 -- SEI	
R27	76-105-01	1	1M OHM .25W 5% RESISTOR	1M		1MQTR-ND -- YAGEO/DIGIKEY	1M-R86-0040 -- SEI
R28	76-047-01	1	4.7 OHM .25W 5% RESISTOR	4.7		4.7QTR-ND -- YAGEO/DIGIKEY	4.7-R86-0040 -- SEI
R29	76-472-01	1	4.7K OHM .25W 5% RESISTOR	4.7K		4.7KQTR-ND -- YAGEO/DIGIKEY	4.7K-R86-0040 -- SEI
R30	76-471-01	1	470 OHM .25W 5% RESISTOR	470		470QTR-ND -- YAGEO/DIGIKEY	470-R86-0040 -- SEI
R31	76-473-01	1	47K OHM .25W 5% RESISTOR	47K		47KQTR-ND -- YAGEO/DIGIKEY	47K-R86-0040 -- SEI
R32	76-222-01	1	2.2K OHM .25W 5% RESISTOR	2.2K		2.2KQTR-ND -- YAGEO/DIGIKEY	2.2K-R86-0040 -- SEI
R33	76-103-01	1	10K OHM .25W 5% RESISTOR	10K		10KQTR-ND -- YAGEO/DIGIKEY	10K-R86-0040 -- SEI
R34	78-103-02	3	10K 2W 5% MOX OR CF BULK			10K-86-3263 -- SEI	0
R35	77-474-02	3	475K OHM .5W 1% RESISTOR	475K		475-R86-1541 -- SEI	
R37							
R39	77-103-02	3	10K OHM .5W 1% RESISTOR	10K		10K-R86-1541 -- SEI	
R40	77-104-02	5	100K OHM .5W 1% RESISTOR	100K		100K-R86-1541 -- SEI	
R41	77-105-02	4	1M OHM .5W 1% RESISTOR	1M		1M-R86-1541 -- SEI	
R42	77-104-02	5	100K OHM .5W 1% RESISTOR	100K		100K-R86-1541 -- SEI	
R43							
R44	77-224-02	5	221K OHM .5W 1% RESISTOR	221K		221K-R86-1541 -- SEI	
R45							
R46	76-221-01	2	220 OHM .25W 5% RESISTOR	220		220QTR-ND -- YAGEO/DIGIKEY	220-R86-0040 -- SEI
R47							
R49	78-100-01	4	10 OHM 2W 5% MOX OR CF BULK	10		10-86-3263 -- SEI	0
R50							
R51							
R52							
S2	88-302-02	1	MINI PCB DPDT W/1C911 BLACK (RECT)	DPDT DUAL	BOOST SW	MTH-2UEENGAX/1C911 -- E-SWITCH	
W1	97-168-32	1	3.5 RED STRIP WIRE"	20 G RED			
W2	97-168-36	1	3.5 BLK STRIP WIRE"	20 G BLK			